

FURLEX 200S-500S

FURLEX

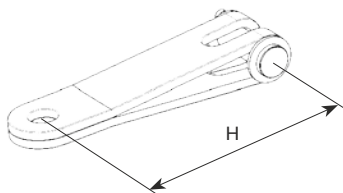
Jib furling and reefing system for yachts from approx. 30-70 ft



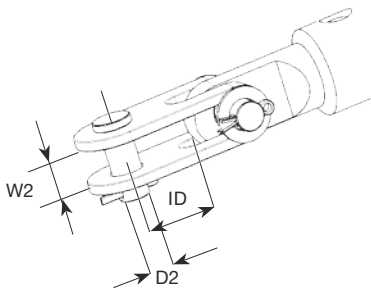
Furlex 200S - 300S

Furlex 400S - 500S

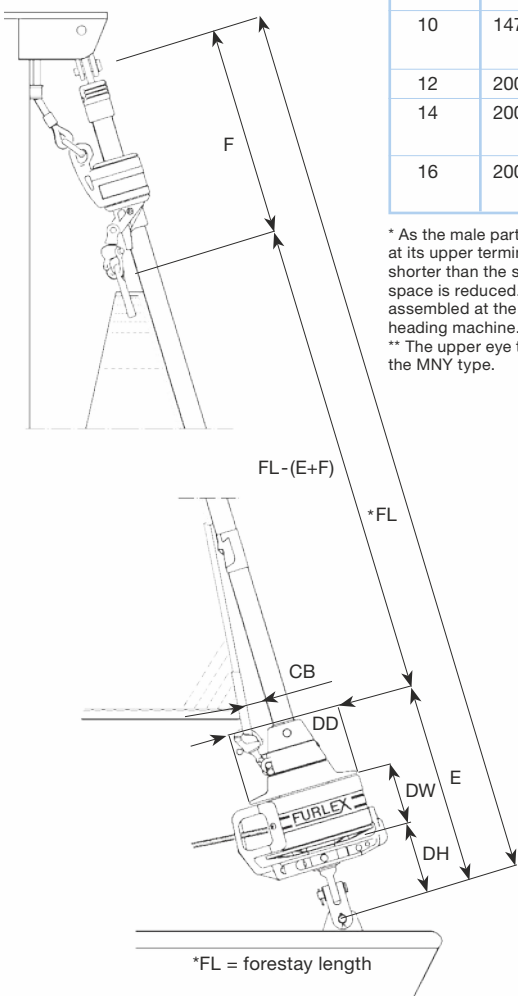
- Centred and insulated forestay and completely insulated joining sleeves make furling easier, reduce wear and cut out the risk of corrosion.
- Unique, patented load-distributor for easy furling and unrivalled bearing durability. Lightweight halyard swivel keeps weight aloft to a minimum.
- Sailfeeder in high grade, marine stainless steel for improved durability and service life. Composite connector for the optimum strength-to-weight ratio.
- Tack swivel with a free-turn, combined with the uniform profile of the forestay extrusion, give a perfectly furled sail and effective performance even when reefed. Twin grooves and split drum – allow for fast sail changes and make Furlex easily adapted for racing.
- Unique line-guide system – controls and centres furling line and arranges it evenly onto the drum.
- Fully integral rigging screw (optional) for fast and simple forestay adjustment, without affecting the uniform profile of the extrusion or the drum height above deck. The rigging screw adjusts through 60 mm, 80 and 100 mm depending on size of system.



Extension link: Used to increase the distance between the lower unit and the deck for a bow anchor etc.

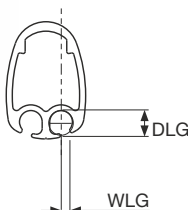


Furlex standard toggle.



Complete system.

Furlex is available with Dyform wire. Information on Furlex Hydraulic is available separately. Please ask for details.



| Furlex series | Forestay dia. mm | Rod dia. (mm) | Navtec | OYS** (Riggarna) | BSI | Max righting moment (kNm) at 30° heel | | Approx. displacement, tonnes | |
|---------------|------------------|---------------|--------|------------------|-----|---------------------------------------|----------------|------------------------------|----------------|
| | | | | | | Masthead rig | Fractional rig | Masthead rig | Fractional rig |
| 200S | 6 | -8 (5.7) | X | X | X | 19 | 23 | 3.9 | 4.5 |
| | 7 | -10 (6.4) | X | X | X | 27 | 34 | 5.5 | 7 |
| | 8 | -12 (7.1) | X | | X | 37 | 45 | 7.5 | 9 |
| 300S | 8 | -15 (7.5) | | X* | X | | | | |
| | | -12 (7.1) | X | | X | 40 | 50 | 8 | 10 |
| | 10 | -17 (8.4) | X | | X | 70 | 80 | 14 | 15 |
| | | -22 (9.5) | X | X | X | | | | |
| 400S | 12 | -30 (11.1) | X | X | X | 120 | 160 | 20 | 26 |
| | 14 | -30 (11.1) | X | | X | 180 | 190 | 28 | 30 |
| | | -40 (12.7) | X | X | X | | | | |
| 500S | 16 | -40 (12.7) | X | X | X | 230 | 250 | 38 | 40 |
| | | -48 (14.3) | X | X | X | | | | |

| Forestay dia. (mm) | DH mm | DW mm | DD mm | CB mm | E mm | F mm | ID mm | W2 mm | D2 Clevis pin | Forestay adjustment dia., mm | Extension link H mm | Halyard sheave box Art. No. |
|--------------------|-------|-------|-------|-------|------|------|-------|-------|---------------|------------------------------|---------------------|-----------------------------|
| 6 | 120 | 94 | 186 | 60 | 330 | 440 | 24 | 11 | 10 | 60 | 90 | 505-006-10 |
| 7 | 120 | 94 | 186 | 60 | 330 | 440 | 24 | 12.5 | 12 | 60 | 90 | 505-006-10 |
| 8 | 120 | 94 | 186 | 60 | 330 | 440 | 31 | 15.5 | 14 | 60 | 130 | 505-012-10 |
| 8 | 147 | 113 | 216 | 80 | 400 | 550 | 31 | 15.5 | 14 | 80 | 130 | 505-012-10 |
| 10 | 147 | 113 | 216 | 80 | 400 | 550 | 34 | 16 | 16 | 80 | 130 | 505-012-10 |
| 12 | 200 | 140 | 250 | 95 | 535 | 620 | 40 | 21 | 19 | 100 | 190 | 505-012-10 |
| 14 | 200 | 140 | 250 | 95 | 535 | 620 | 50 | 23 | 22 | 100 | 190 | 505-012-10 |
| 16 | 200 | 140 | 250 | 95 | 535 | 620 | 50 | 26 | 22 | 100 | - | 505-038-01 |

* As the male part of this rod terminal type/size is too large to pass through the luff extrusions, the rod forestay can only be cold-headed at its upper terminal end after the stay has been pulled through the assembled extrusions. The extrusion must be made 200 mm (8") shorter than the stay at the top to make room for the cold-heading machine. Consequently, the luff extrusions length and available sail space is reduced. The system has to be assembled at the location of the cold-heading machine.

** The upper eye terminal must be of the MNY type.

| Furlex series | Forestay dia. mm | Max. forestay length, m | Art. No. Standard version | Art. No. Incl. rigging screw |
|---------------|------------------|-------------------------|---------------------------|------------------------------|
| 200S | 6 | 10.6 | 031-021-51 | 031-021-61 |
| | 6 | 13.0 | 031-021-52 | 031-021-62 |
| | 6 | 15.4 | 031-021-53 | 031-021-63 |
| | 7 | 13.0 | 031-021-54 | 031-021-64 |
| | 7 | 15.4 | 031-021-55 | 031-021-65 |
| | 7 | 17.8 | 031-021-56 | 031-021-66 |
| | 8 | 15.4 | 031-021-57 | 031-021-67 |
| | 8 | 17.8 | 031-021-58 | 031-021-68 |
| 300S | 8 | 15.5 | 039-027-51 | 039-027-61 |
| | 8 | 17.9 | 039-027-52 | 039-027-62 |
| | 10 | 15.5 | 039-027-53 | 039-027-63 |
| | 10 | 17.9 | 039-027-54 | 039-027-64 |
| | 10 | 20.3 | 039-027-55 | 039-027-65 |
| 400S | 12 | 17.7 | 049-034-51 | 049-034-61 |
| | 12 | 20.1 | 049-034-52 | 049-034-62 |
| | 12 | 22.5 | 049-034-53 | 049-034-63 |
| | 14 | 20.1 | 049-034-54 | 049-034-64 |
| | 14 | 22.5 | 049-034-55 | 049-034-65 |
| 500S | 16 | 23.0 | 060-046-56 | 060-046-66 |
| | 16 | 27.8 | 060-046-57 | 060-046-67 |

| Furlex series | Internal diameter of luff groove (DLG), ø mm | Width of luff groove (WLG), mm |
|---------------|----------------------------------------------|--------------------------------|
| 200S | 6.0 | 3.0 |
| 300S | 7.5 | 3.0 |
| 400S | 8.0 | 3.0 |
| 500S | 9.2 | 3.0 |

SELDÉN
for sailing

CRUSADER SAILS The Sail Loft Hatch Pond Road Poole UK BH17 OJZ
Tel: +44 (0) 1202 670580 E-mail: info@crusadersails.com Web: www.crusadersails.com

